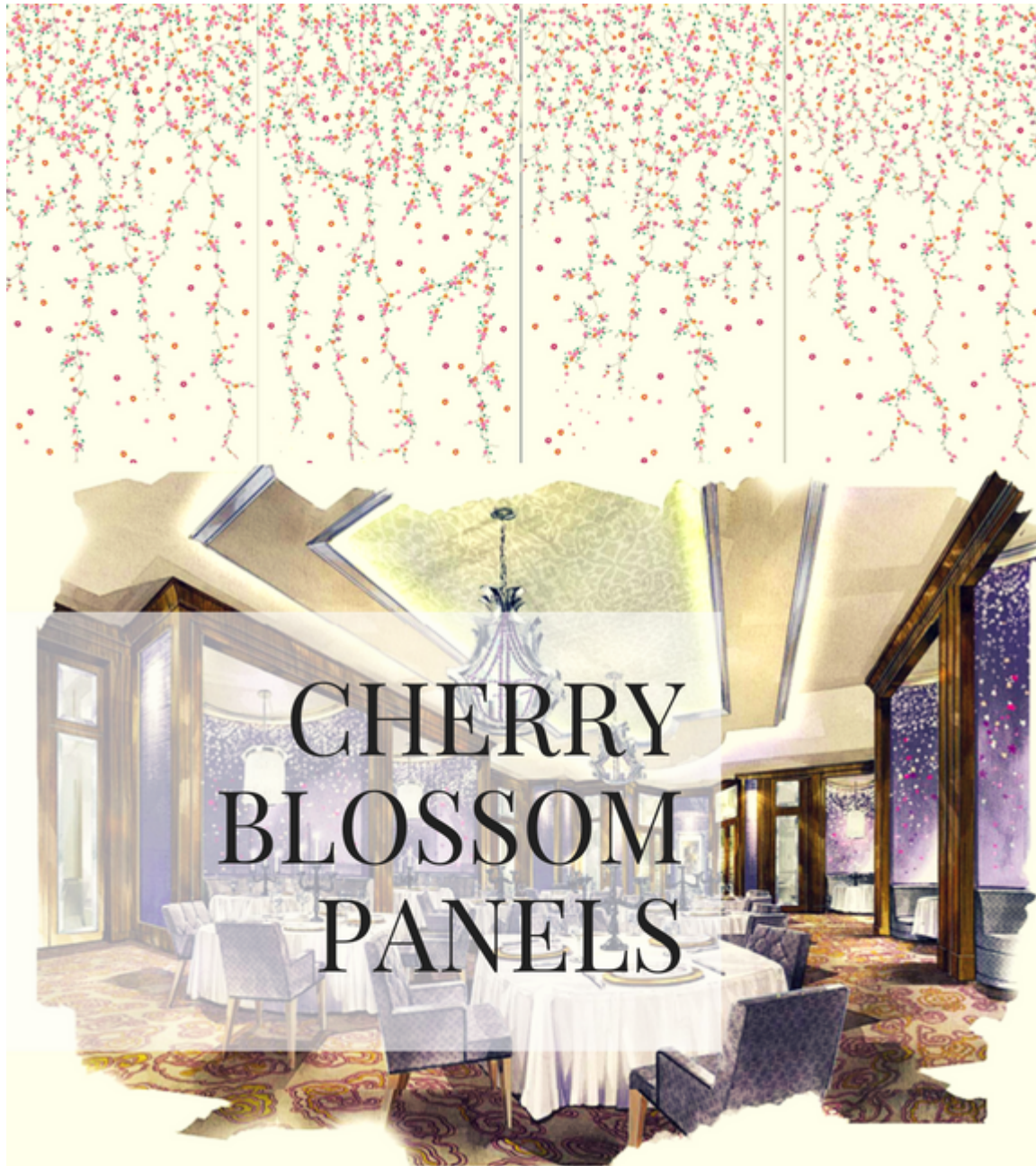


Cherry Blossom



OBJECTIVE

Designer came up with this rendering to create a custom fabric for wall upholstery of dining booths in a high end restaurant to emulate cherry blossom flowers.

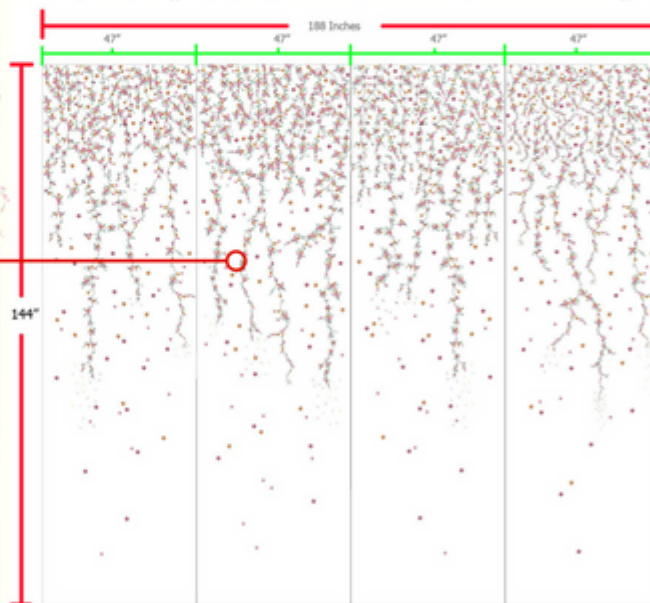


CONSULTATION

Taffard worked with the designer to come up with design, stitch style, colors and scale to the client's specifications.

Based on client's requirements, Taffard combined 4 fabric widths and designed the embroidery so that it does not cross over from selvage to selvage.

Each finished panel was 188 inches wide and 144 inches long.



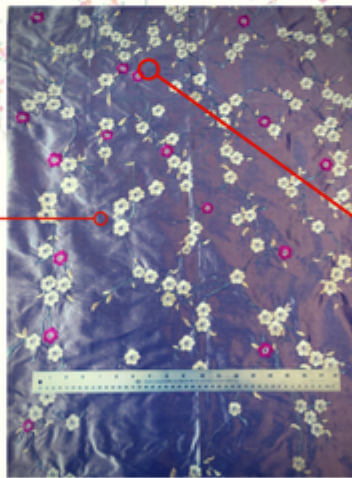
SAMPLE DEVELOPMENT

Numerous CADs, embroidery samples and backing samples were submitted for approval prior to production.

Content: 100% silk fabric base(Athens) with paper backing.

Quantity: 5 curved wall niches required for wall upholstery of dining booths in a high end restaurant.

Here you can see a sample embroidery panel with the zoomed in shot approved by our client.



COMPLETION

One large panel is made up of 4 widths of 47" x 144".

Fabric was made in India, paper backed in the USA and shipped to Macau

Lead Time: 3 months(12 weeks) from beginning of design phase to delivery

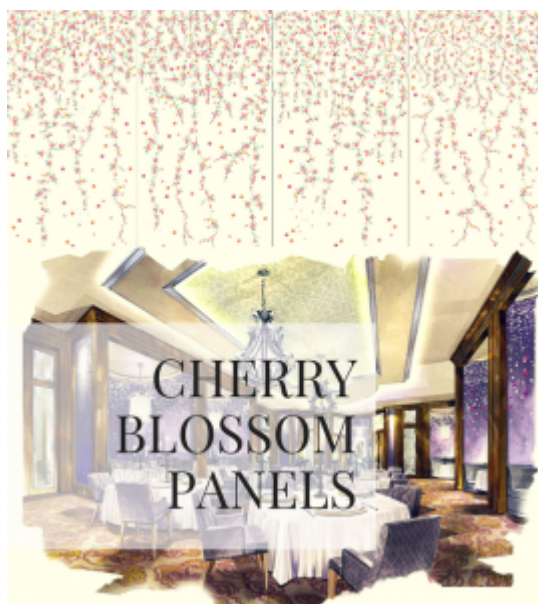
Used in a restaurant in the Venetian in Macau

Here you can see the final installation image sent by client

Price on request.



www.taffard.com



CHERRY
BLOSSOM
PANELS

OBJECTIVE

Designer came up with this rendering to create a custom fabric for wall upholstery of dining booths in a high end restaurant to emulate cherry blossom flowers.



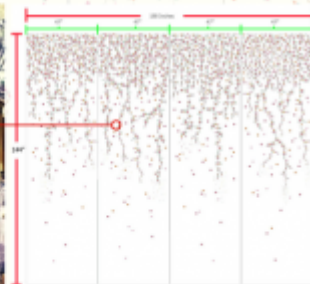
www.tatford.com

CONSULTATION

Tatford worked with the designer to come up with design, stitch style, colors and scale to the client's specifications.

Based on client's requirements, Tatford combined 4 fabric widths and designed the embroidery so that it does not cross over from selvage to selvage.

Each finished panel was 188 inches wide and 144 inches long.



www.tatford.com

SAMPLE DEVELOPMENT

Numerous CADs, embroidery samples and backing samples were submitted for approval prior to production.

Content: 100% silk fabric base(Athens) with paper backing.
Quantity: 1 curved wall niches required for wall upholstery of dining booths in a high end restaurant.

Here you can see a sample embroidery panel with the zoomed in shot approved by our client.



www.tatford.com

COMPLETION

One large panel is made up of 4 widths of 42" x 144".

Fabric was made in India, paper backed in the USA and shipped to Macau.

Lead Time: 3 months(12 weeks) from beginning of design phase to delivery

Used in a restaurant in the Venetian in Macau.

Here you can see the final installation image sent by client.

Price on request.



www.tafad.com

Download Brochure

