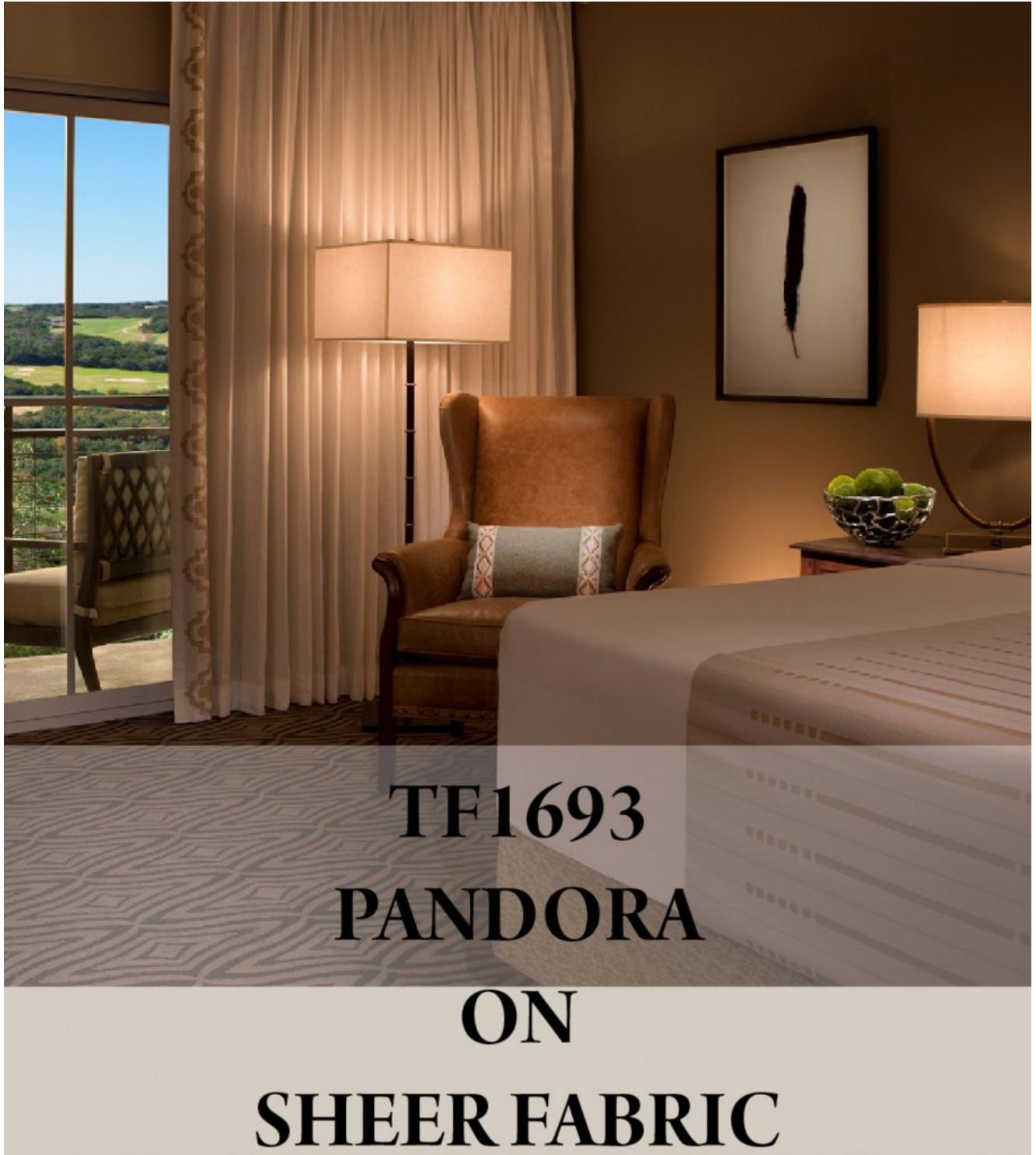
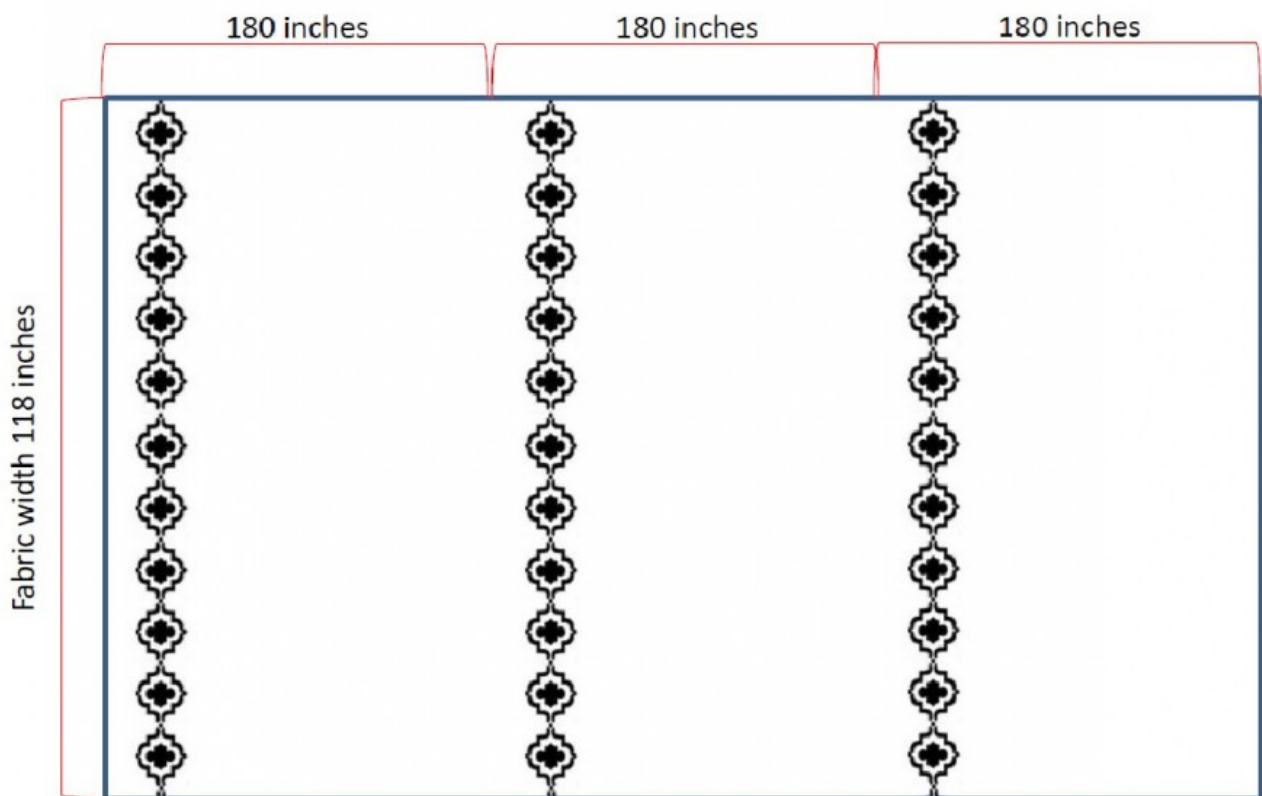


TF1693- Pandora on Sheer Fabric



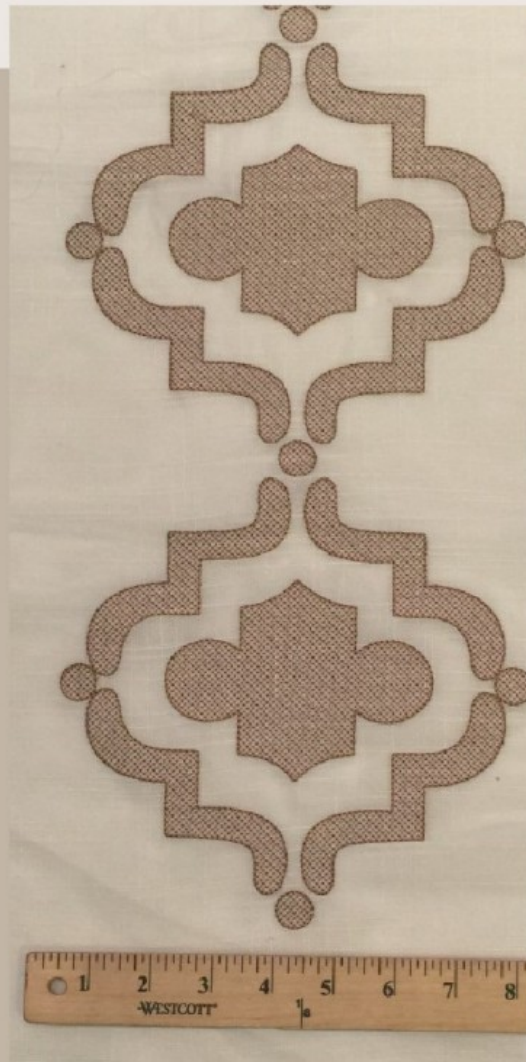
CONSULTATION

Taffard and the Designer decided to railroad the embroidery and have it repeat every 5 yards to minimize the cost while maximizing the impact of the embroidery.



SAMPLE DEVELOPMENT

Taffard's strikeoff showing the scale and pattern of the design.



Taffard's Pandora Design is applied to 118" wide sheer for Guest Rooms at La Cantera Resorts designed by Looney Associates.



COMPLETION

Final installation of curtains in the guest room.

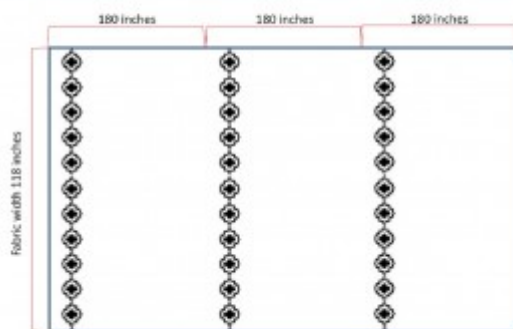




CLIENT'S PROJECT: TF1693- PANDORA ON SHEER FABRIC

CONSULTATION

Taffard and the Designer decided to railroad the embroidery and have it repeat every 5 yards to minimize the cost while maximizing the impact of the embroidery.



www.taffard.com

CLIENT'S PROJECT: TF1693- PANDORA ON SHEER FABRIC

SAMPLE DEVELOPMENT

Taffard's strikeoff showing the scale and pattern of the design.



www.taffard.com

CLIENT'S PROJECT: TF1693- PANDORA ON SHEER FABRIC

Taffard's Pandora Design is applied to 118" wide sheer for Guest Rooms at La Cantera Resorts designed by Looney Associates.



CLIENT'S PROJECT: TF1693- PANDORA ON SHEER FABRIC

COMPLETION

Final installation of curtains in the guest room.



Download Brochure

